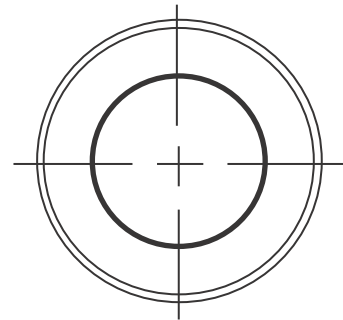
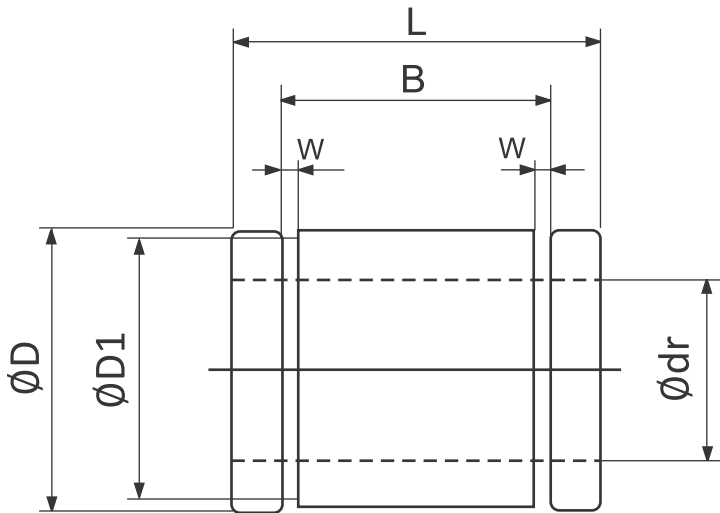


## Ordering Key : SMT 20

1 2

1 SMT Thin Profile Self-Lubricated Linear Bearing

2 Bearing Inner Diameter



Model NO	Inner Dia Ødr(F8)	ØD (F6)	L	B	W	ØD1	Max. Static Load kgf	Max. PV kgf *m/sec	Max. Speed m/sec	Weight g
SMT10	10	17	26	8.3	1.15	16.20	180	9.3	2	10.49
SMT12	12	19	28	8.7	1.35	18.00	230	12	2	12.97
SMT16	16	24	30	10.7	1.35	22.90	330	17.2	2	20.49
SMT20	20	28	30	13.3	1.65	26.60	420	21.5	2	24.59
SMT25	25	35	40	15.8	1.65	33.00	700	35.8	2	51.23
SMT30	30	40	50	18.8	1.90	38.00	1050	53.7	2	74.71
SMT40	40	52	60	24.4	2.20	49.00	1600	85.9	2	141.4
SMT50	50	62	70	29.4	2.20	59.00	2400	125	2	200.8

